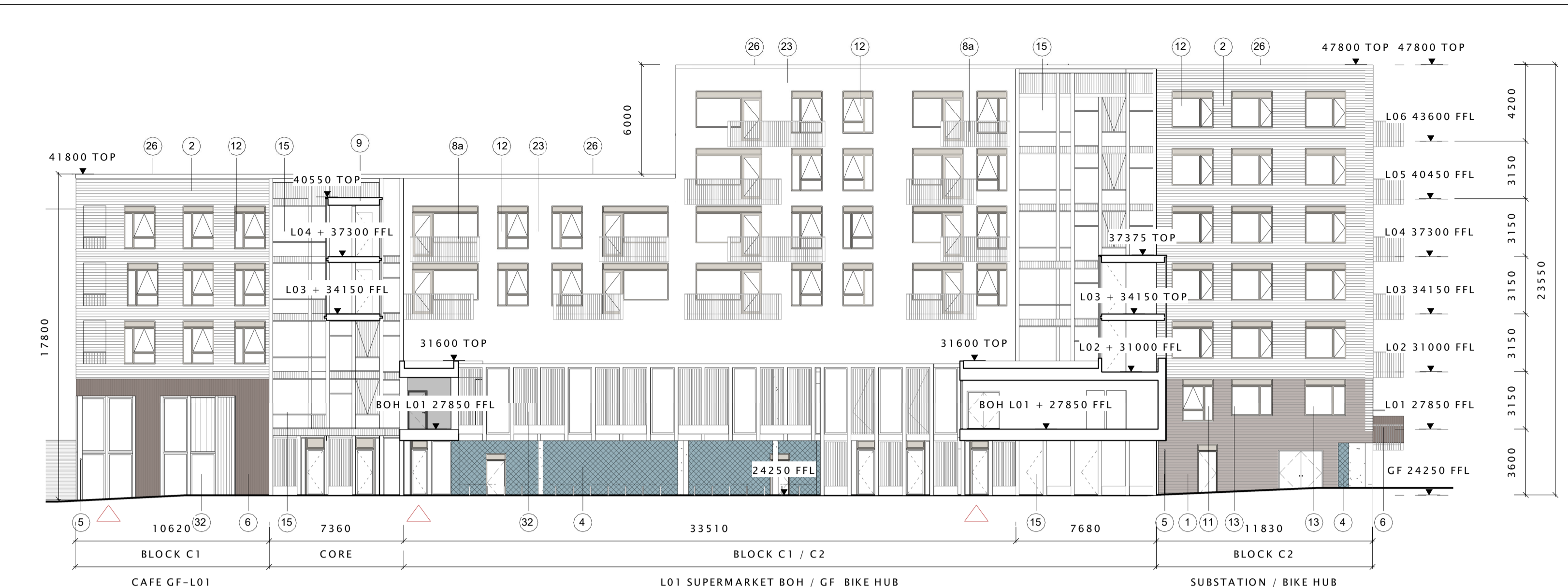
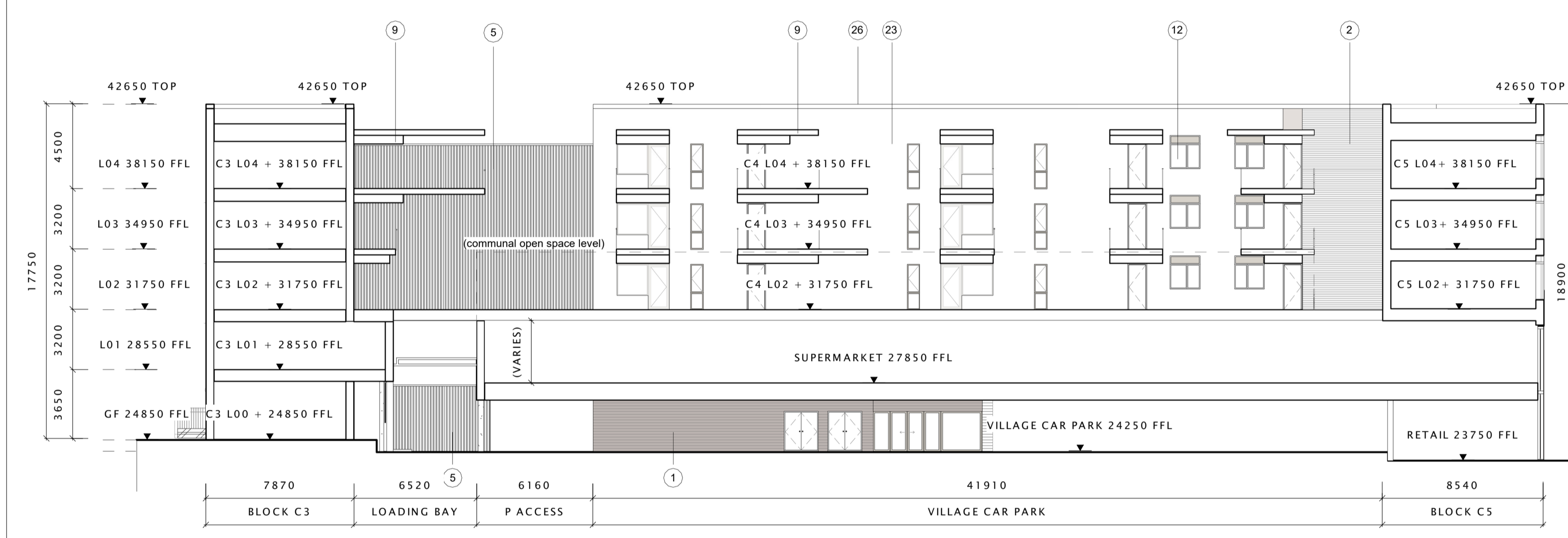


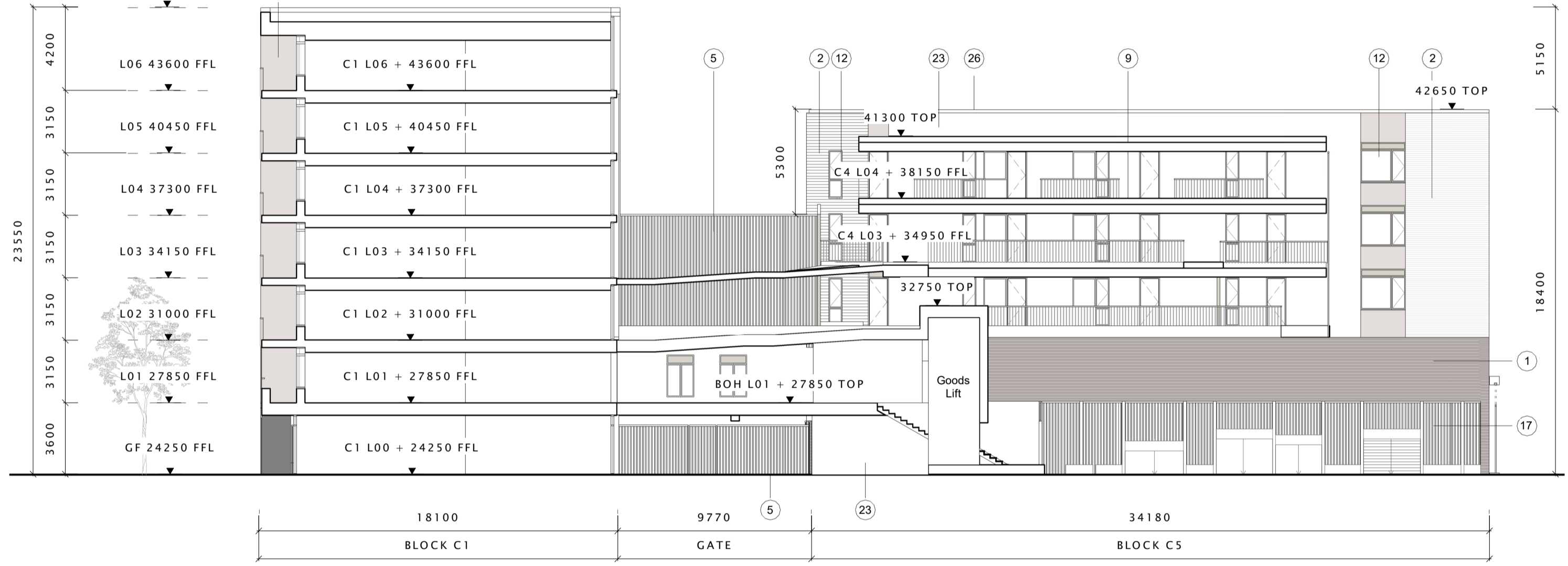
01 Block C Section/Elevation (North)
1:200



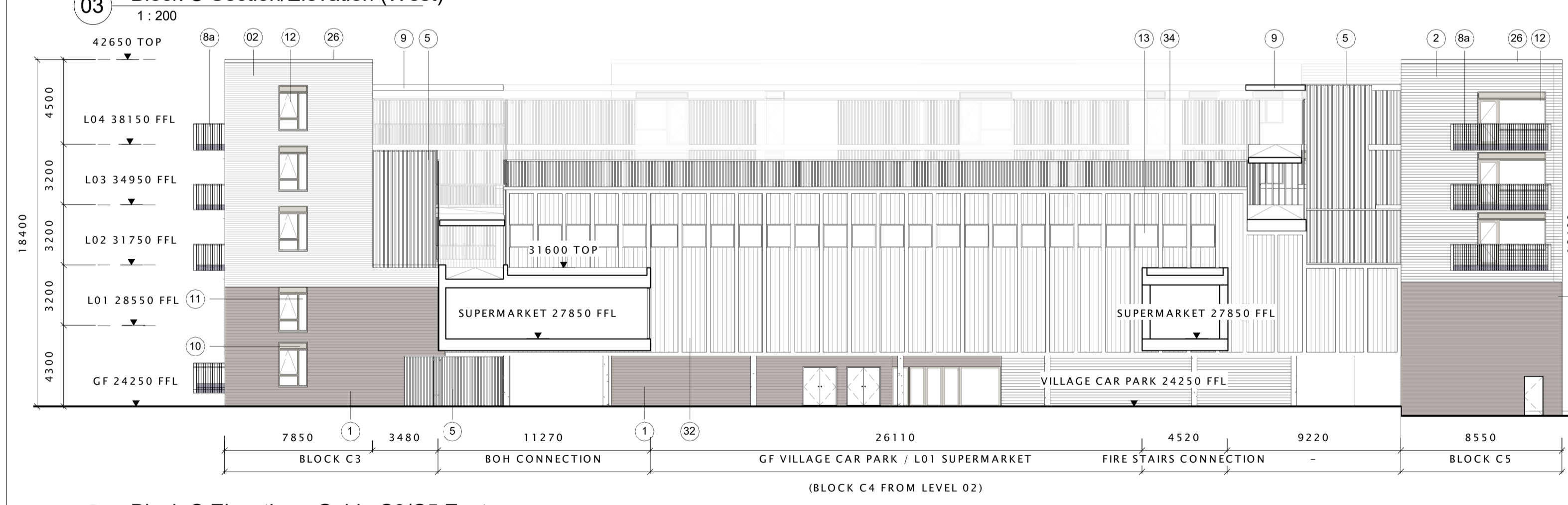
02 Block C Section/Elevation (East)
1:200



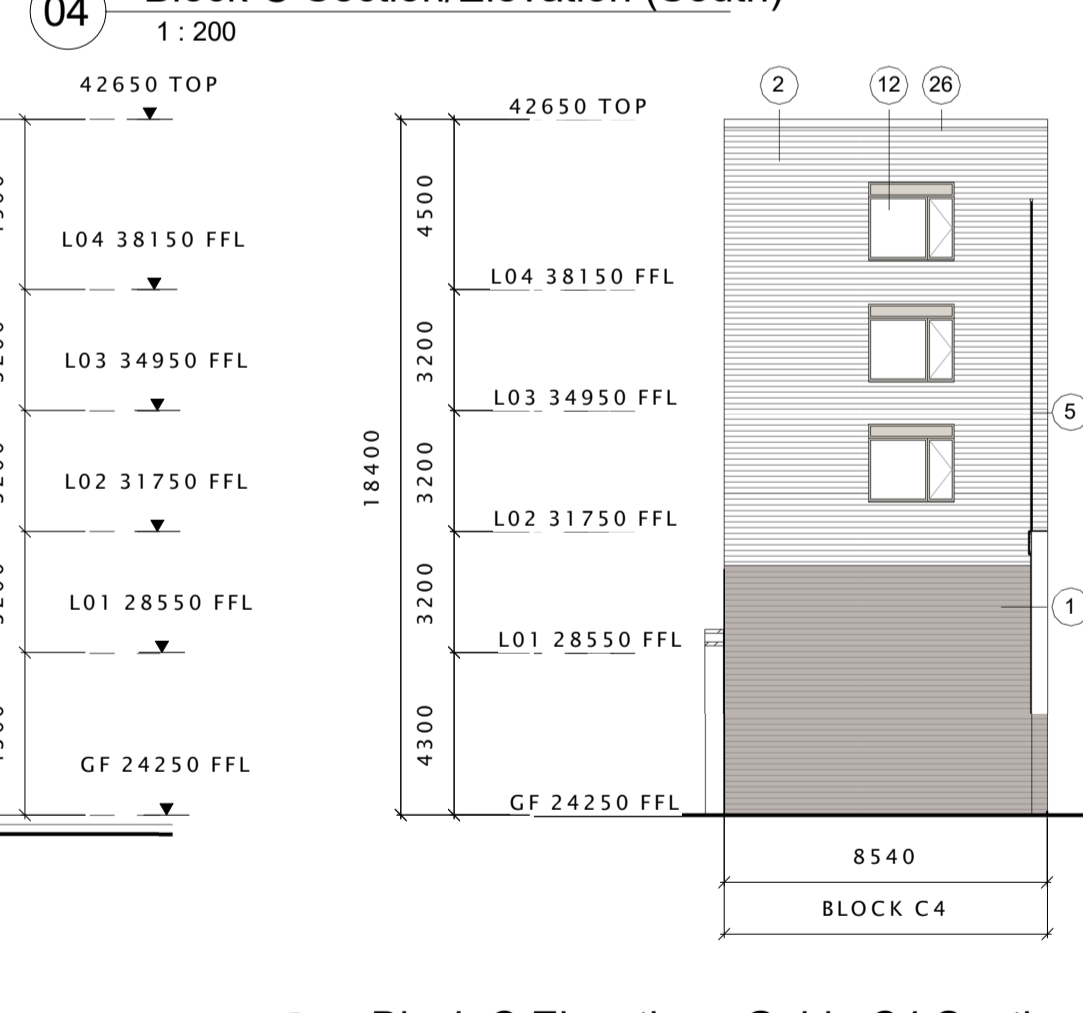
03 Block C Section/Elevation (West)
1:200



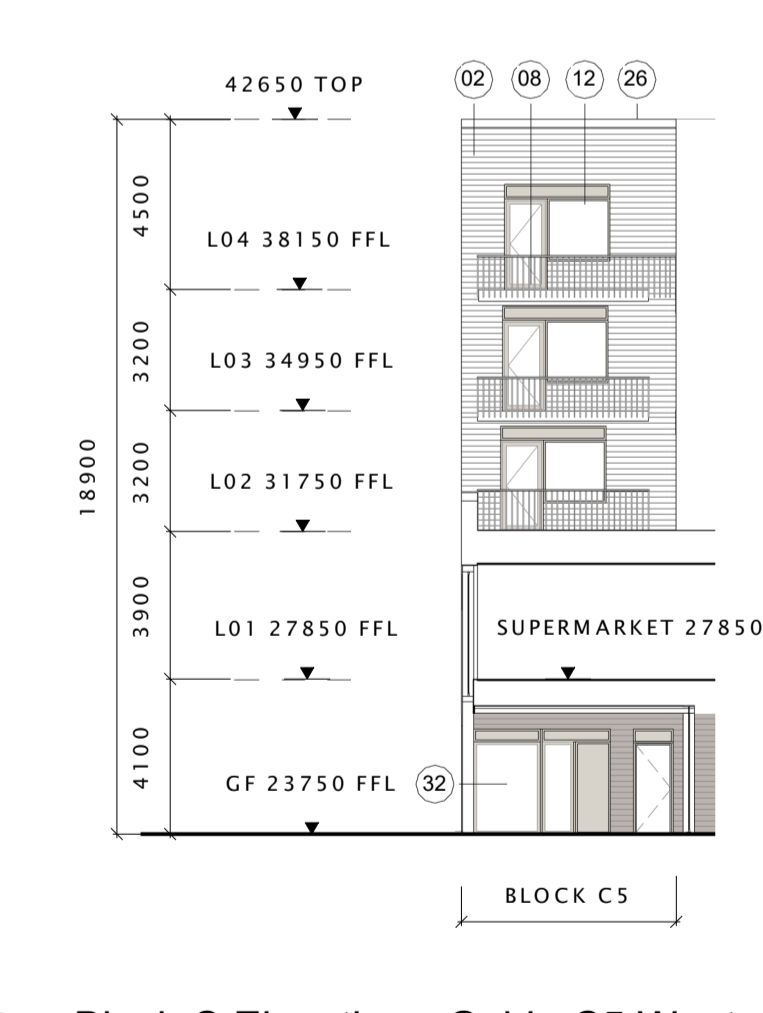
04 Block C Section/Elevation (South)
1:200



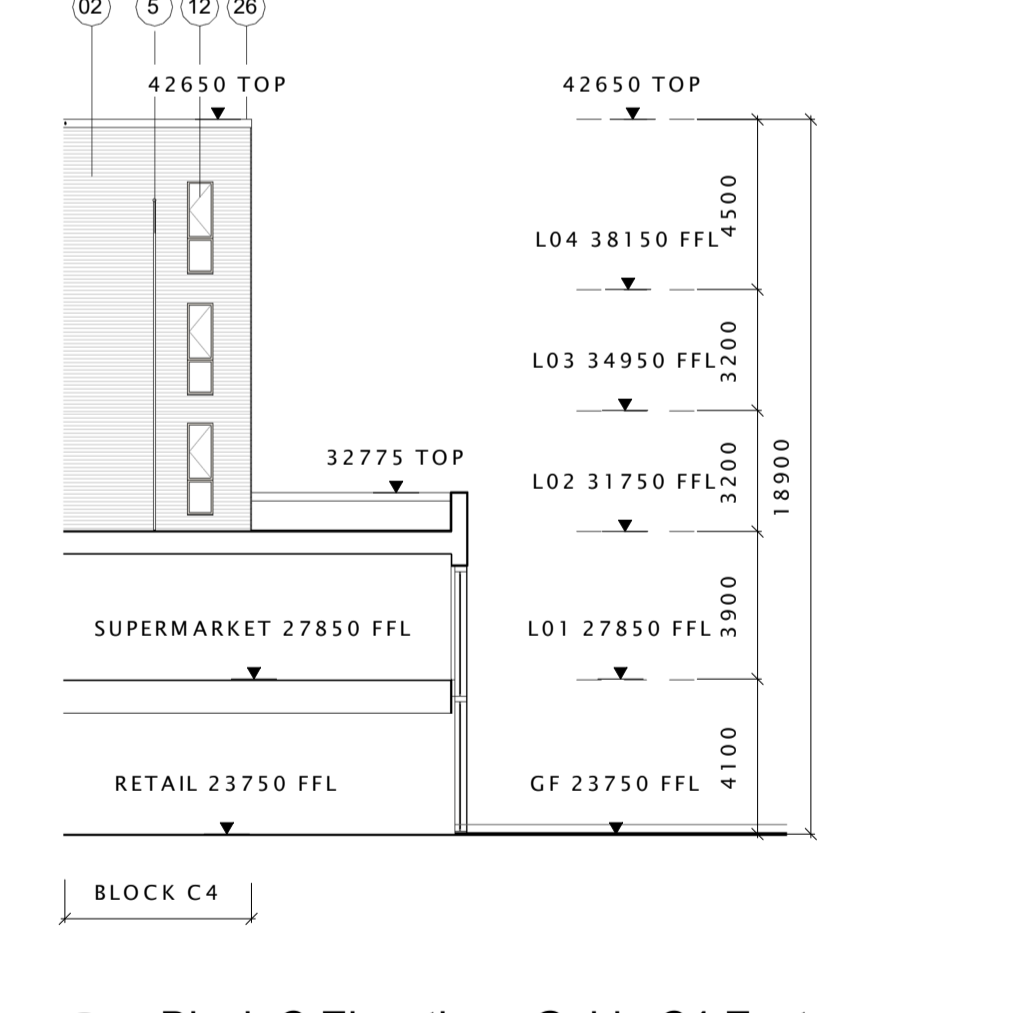
05 Block C Elevation - Gable C3/C5 East
1:200



06 Block C Elevation - Gable C4 South
1:200

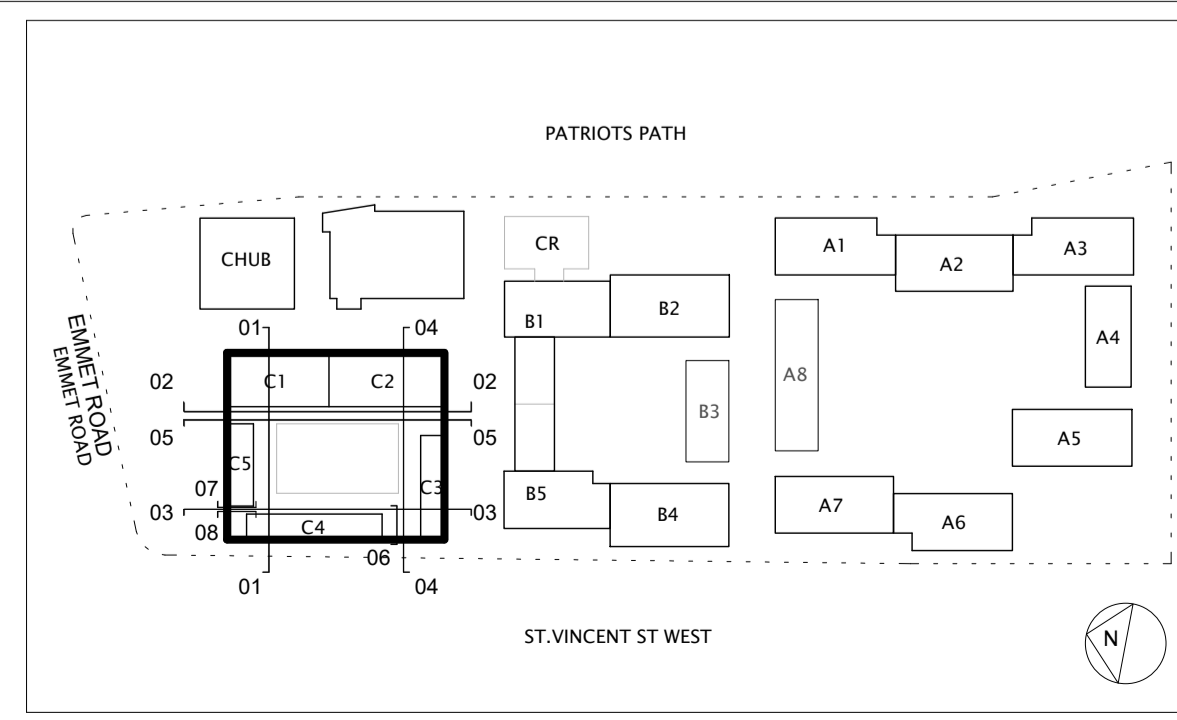


07 Block C Elevation - Gable C5 West
1:200



08 Block C Elevation - Gable C4 East
1:200

revision	drawn	checked	date	no.



- Facade Materials Key Notes: To be read in conjunction with the Architectural Design Statement**
- Grey clay brickwork
 - White clay brickwork
 - Mid grey clay brickwork
 - Coloured glazed terracotta tile finish or similar
 - Galvanised steel or timber screen with integrated access sliding and/or swing gates as indicated.
 - White precast concrete cladding panel or similar.
 - Recessed balcony with flat bar galvanised metal railings, timber top rail, fascia and soffit with aluminium finish
 - Projecting balcony with flat bar galvanised metal railings, fascia and soffit with aluminium finish
 - Aluminium privacy screening where indicated or similar
 - Gallery access structures, with flat bar galvanised metal with aluminium soffit panels, non-slip plank deck or similar
 - Composite double glazed window, aluminium finish externally and timber internally, with precast concrete lintel and cill, integrated metal spandrel panel / louvre, with door where indicated.
 - Composite double glazed window, aluminium finish externally and timber internally, with metal cill, integrated metal spandrel panel / louvre, with door where indicated.
 - Composite double glazed window, aluminium finish externally
 - Entrance window / door glazing system with precast concrete cladding panel surround or similar
 - Curtain wall glazing system to staircase with door and AOV where indicated, natural anodised aluminium finish
 - Galvanised steel or timber screen with integrated access sliding and/or swing gates as indicated with curtain wall glazing system
 - Anodised aluminium roller shutters
 - Perforated aluminium profiled screening to roof plant area
 - Galvanised steel framed balcony structure
 - White Render finish
 - White Precast Concrete Panel with entrance signage / services
 - Ventilation panel
 - Dark Grey precast concrete coping
 - Transparent glass panels with integrated ventilation louvres
 - Selected colour glass panel
 - Composite double glazed curtain wall system, aluminium finish externally and timber internally
 - Flat bar metal railings, with metallic coloured finish
 - Perforated clay brickwork screen wall, warm grey coloured blend
 - precast concrete bench
 - Metal coping, natural anodised

NOTES:
No dimensions on this drawing are to be scaled.
All levels and dimensions on this drawing are to be checked on site. Any discrepancies on this drawing are to be reported to and verified with the architect.
This drawing is to be read in conjunction with all other application documentation and information as issued.
This is not a construction drawing, it is unsuitable for the purpose of construction and must not on account be used as such.
(* Placeholder names are used for ease of reference in the Application Documents)
This drawing is the copyright of Bucholz McEvoy Architects Ltd and may not be copied, altered, or reproduced in any form or passed to a third party without license or written consent.

PLANNING
drawing **COMMERCIAL MIXED USE - ELEVATIONS / SECTIONS (COURTYARD)**

drawing no.	scale	drawn	project no.
0318-C-A4-03	1:200@A1	MA/SJ	0318
date	checked	revision	
SEPT 2022	MB		

project **EMMET ROAD MIXED-USE DEVELOPMENT, DUBLIN 8**
client **DUBLIN CITY COUNCIL**

bucholzmcEvoyARCHITECTS
UNIT C MOUNTPLEASANT BUSINESS CENTRE UPPER MOUNTPLEASANT AVENUE DUBLIN 6 IRELAND
T +353 1 496 6340 F +353 1 496 6341 INFO@BMCEA.COM WWW.BMCEA.COM